

GSM 2G/4G/WiFi Alarm System



Official website link



Google play link



User Manual

Contents

| | |
|-----------------------------------|-------|
| 1.Function Introduction... | 2 |
| 2.Features | 3 |
| 3.Installation | 5 |
| 4.Mobile phone APP..... | 8-16 |
| Mobile phone | |
| APP download | |
| Configuration | |
| APP Operation | |
| 5.Function Setting..... | 17-27 |
| Initialization | |
| System Setting | |
| Return Setting | |
| 6.Daily operation | 28 |
| 7.Alarm procedure and handling... | 29 |
| 8.Remote Control..... | 30 |
| 9.SOS..... | 30 |
| 10. Additional features..... | 31 |
| 11.Maintenance..... | 31 |
| 12.Technical parameters..... | 32 |
| 13.Notes | 32 |

1.Function Introduction

- Wifi &4G/GSM dual networking, support APP Push,SMS push voice monitoring and other multi-channel alarm mode.
- 8 wired defense zones,200 wireless defense zones 【support for renaming】
- Up to learn 8 wireless remotes.
- LCD display with built-in clock,intuitive and convenient
- The whole process of real voice prompts,installation settings and daily operations are more user-friendly.
- Automatically send message when low battery.
- Ac power failure and AC recovery SMS prompt
- Built-in intercom speaker, can realize duplex intercom function.
- Built-in 433 transceiver module, which can be linked to wireless siren and smart home system (optional)
- Set and control the alarm by APP
- Timing arm and disarm function
- Up to 6 groups of preset alarm phone numbers, SMS on/off and voice on/off can be set respectively
- 2 groups of preset alarm SMS, push notifications via SMS & APP
- Built-in multi-languages,free to switch.
- Remote control in different places: the host arm, disarm, monitor, intercom and so on
- Additional functions: The alarm can be used as telephone, and it can make phone calls,inquire phone charges and prepaid recharge by alarm keyboard.
- One-key control: arming out, arming at home, arming by remote control, arming by remote phone
- Instant, at home, 24 hours, bypass multiple zone programming functions

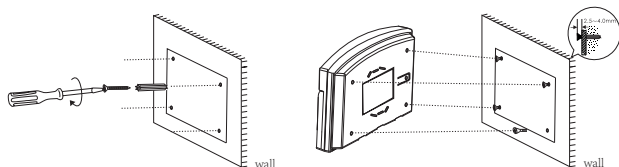
- Code matching: adding new accessories is convenient, fast, safe and efficient
- Remote control in different places: mainframe arming, disarming, monitoring, intercom and so on
- Event record query: host and APP can query historical event records.
- A variety of arming modes: remote control instant arming, outgoing host delayed arming, home host stay arming, designated time timing arming, remote phone remote arming
- Built-in lithium battery rechargeable battery pack, power failure alarm function.

2.Features

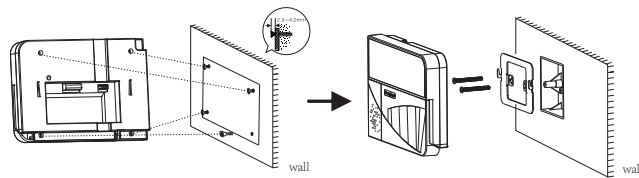
- Simple style, good feel.
- Based on the multitasking design of Freertos system, it has an excellent user operation experience
- 2G/4G/WiFi automatic time calibration, to ensure accurate clock and support time zone setting, which is convenient for use in multiple countries
- LCD graphic display, built-in perpetual calendar clock, operation steps, smart phone control, support for multi-language menus in many countries and regions, voice operation prompts and alarm SMS settings
- Embedded powerful 32-bit Cortex-M3 CPU control
- 2G/4G/WiFi network alarm, support APP push to ensure stable and reliable alarm performance
- Up to 8 remote controllers and 200 wireless detector learning storage locations

- Supports multiple alarm type settings for main door, hall, SOS, bedroom, window, balcony, perimeter, smoke, gas, carbon monoxide, water leakage, etc.
- Supports multiple extended alarm situations such as main power failure and backup battery power shortage
- With wireless sensor battery voltage low alarm function
- Support multiple alarm modes such as going out arming, stay in arming, 24-hour defense zone, doorbell, etc.
- GPRS real-time networking online at any time to obtain the latest working status of the device

1. fixes the keyboard on the wall through the four positioning holes on the back cover of the keyboard, as shown in the below,



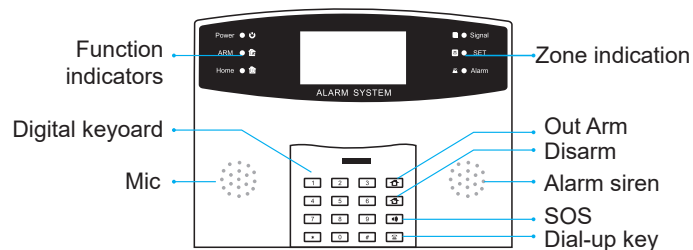
2. fixes the keyboard on the wall or the 86 box installed in the wall through the four positioning holes on the back cover of the keyboard, as shown in the figure below



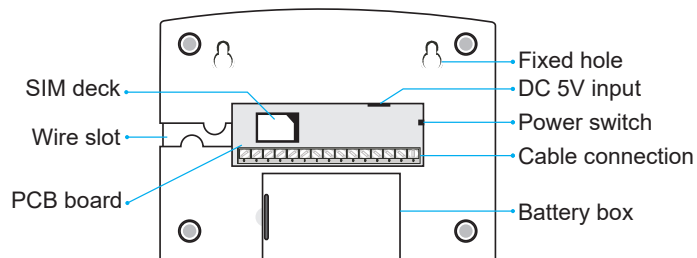
3.Alarm Host Installation

The host should be installed in the center of the protected area, in order to take into account the best reception effect for all wireless detectors. Pay attention to the installation of the host as far as possible away from large metal objects or household appliances with high frequency interference, and avoid shielding objects such as reinforced concrete walls and fire doors.

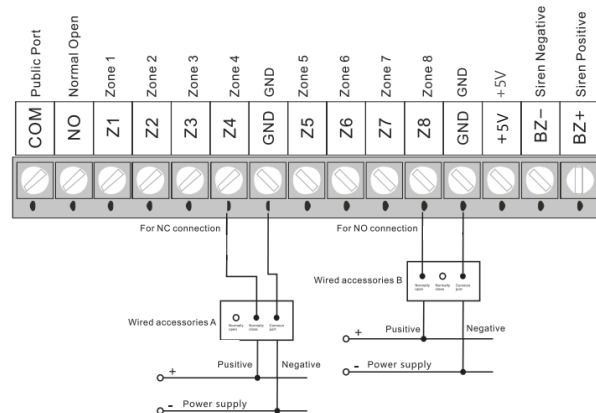
>>Front view of the panel



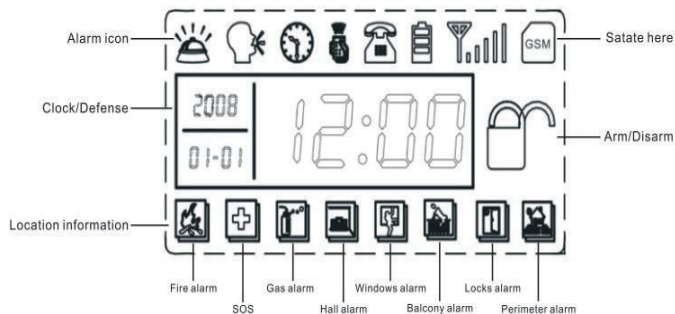
>>Back view of the panel



>>SIM Wire connecting terminal



>>LCD display



4. Cellphone APP

> > APP download

The Smart Life APP has been released to major global app stores. You can search for "Smart Life" in the app store or scan the QR code on the cover to download. For users in mainland China, please scan the QR code of the official website to download; for users from non-mainland China, please scan the QR code of the Google Play link to download. The smart life APP downloaded from the official website link and Google Play link is the same APP, but the download channel is different.

Note: Mainland China may not be able to download the APP through the Google Play link QR code due to network reasons. Select the corresponding device and swipe left to delete the device. Click the appropriate device to rename the device. The description of the APP in this manual is based on the Android system. Some descriptions may be different due to different versions of the APP or different iOS systems. All the APP versions actually installed on the mobile phone shall prevail.

> > Installation

Use your cellphone to scan the QR code on the back cover directly to download and install it. When the host is in the normal power-on and disarm state: input the command engineering password 6666# -- 00 -- #, and the voice broadcast will announce that it has entered the WIFI distribution network mode.

Make sure the host computer and mobile phone are in the same WIFI network.

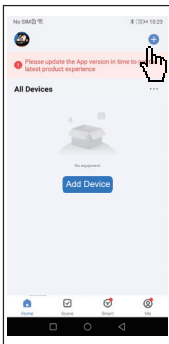
Run the mobile APP software, log in with the registered account on the user login interface (New users need to register an account). On the APP device list interface, press the "Smart Configuration"

button in the upper right corner to enter the smart configuration interface. Select the WIFI network in the APP and enter the WIFI password, press the "OK" button to start the configuration.

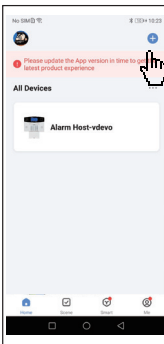
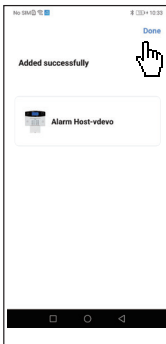
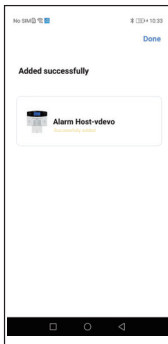
Method 1: Click to add settings in the APP "Smart Life", and operate according to the APP's prompts (turn on Bluetooth). If the network configuration is successful, the detector will broadcast a voice, indicating that the host has been successfully connected to the Internet. If: WIFI configuration more than 120 seconds without successful configuration, it means WIFI configuration failed.

Method 2: Click to add a device in the APP "Smart Life" - (turn on Bluetooth) - click the socket (Bluetooth + WIFI) - confirm the indicator light flashes quickly - click the fast flash - next step - Continue - If the network configuration is successful, the detector will broadcast a voice, indicating that the host has been successfully connected to the network. If the WIFI configuration exceeds 120 seconds and the configuration is not successful, it means that the network access configuration fails. As shown below:

1. Click to add device:



2. Connection

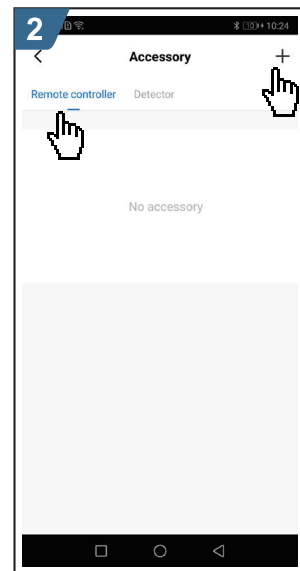
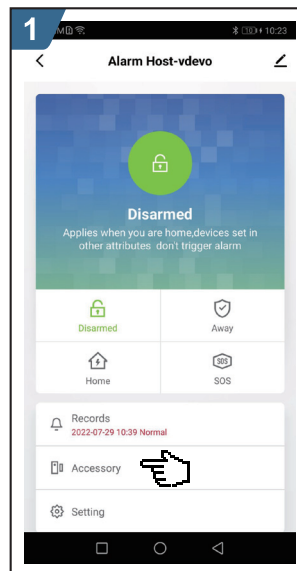


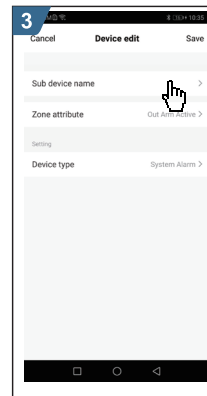
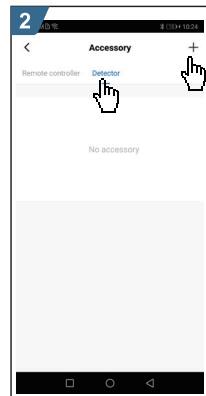
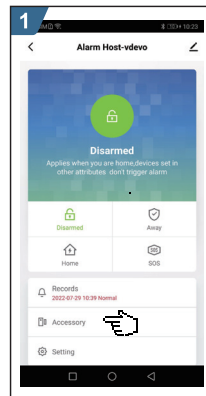
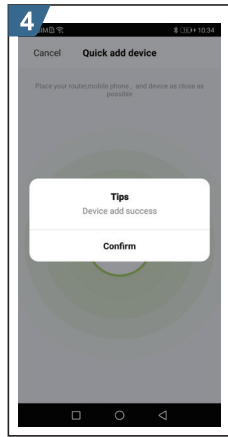
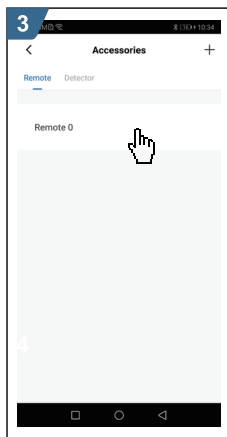
- After pressing the "Start Learning" button, send the remote control learning instruction to the host, press any key of the remote control to be learned to complete the learning, and the host sends the learning success information to the APP.
- The APP pops up "Successful study" to complete the study.
- The APP returns to the remote control setting interface, and recalls the number of remote controls that the host has learned: As shown below,

3. Unbinding the mobile APP from the host

Operating the host:
Main menu - Accessory settings - Unbinding - Confirm. Host prompts "Unbinding"
Add remote control through mobile APP

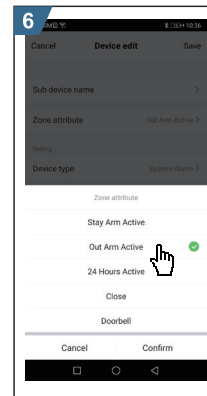
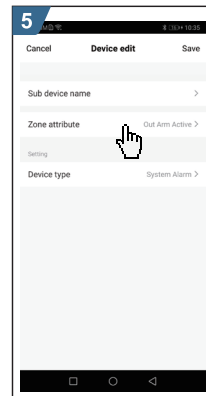
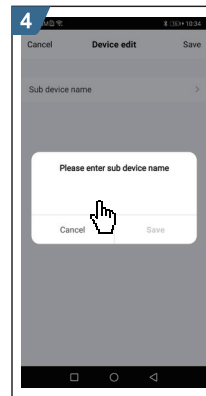
- Go to the "Accessories" menu.
- Press "Remote Control Settings" to enter the remote control setting interface, and the APP will call the number of remote controls that the host has learned.
- Press the "Add Device" button to enter the remote control learning interface





4、Add wireless detectors through mobile APP

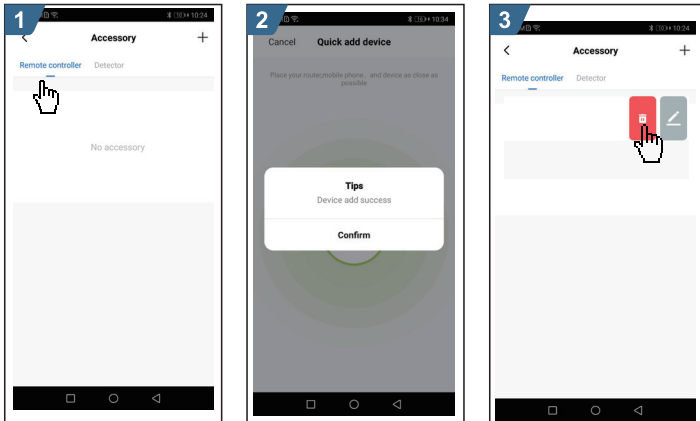
- Enter the "Settings" menu.
- Press the "Add Device" button to enter the detector learning interface.
- Press "Detector" to select the name of the detector to be learned.
- Press the "Zone Type" column to select the required defense zone type for the corresponding detector.
- After pressing the "Start Learning" button, send the detector learning instruction to the host.
- Trigger the launch of the learning detector, complete the learning, and the host sends the learning success message to the APP
- The APP pops up "Successful learning" and the APP returns to the detector settings interface, recall the number of all detectors that the host has learned.



5、Delete the remote control through the mobile APP

- Long press "Remote Control" on the remote control settings interface
- A dialog box pops up, if the user confirms the deletion, press "Yes" and the APP sends the command to delete the remote control to the host.
- The APP returns to the remote control setting interface, and recalls the number of remote controls that the host has learned. If the deletion is successful, the number of remote controls will return to zero.

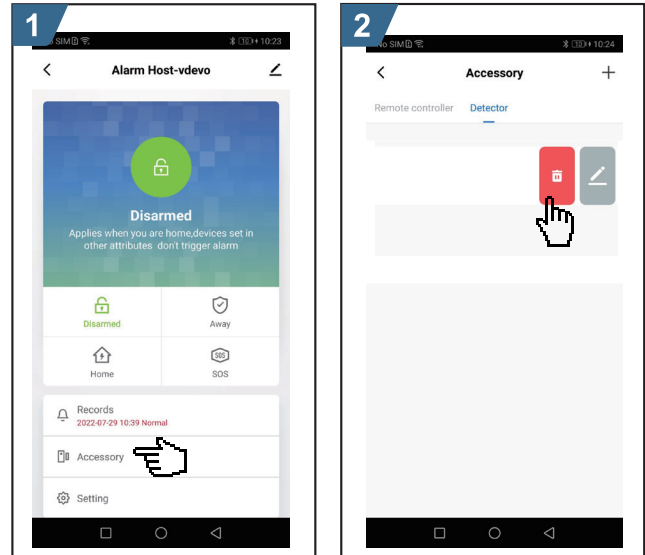
As shown below:



6、Delete wireless detector through mobile APP

- In the detector setting interface, click the "Delete" icon of the detector row to be deleted in the learned detector list.
- A dialog box pops up, if the user confirms the deletion technique "Yes", the APP sends an instruction to delete the corresponding name detector to the host.
- The APP returns to the detector setting interface, and recalls all the detectors that the host has learned. The deleted detectors are gone.

As shown below:



7、Code matching through mobile phone APP and external wireless alarm signal.

- This function only controls the host to transmit the code matching signal to the external wireless alarm in the learning state through the APP.

- See Example 2 [and external wireless alarm code matching].

- During wireless alarm code matching, long press the code matching button and the alarm will ring three times, then release the button to trigger the host to send a signal. When the alarm signal is received by the host, it will give two beeps, indicating that the connection is successful

5.Function Settings





>>Initialization

First install the SIM card of the host, and then power on the alarm host, the built-in buzzer of the host beeps once "di" to indicate that the WIFI connection is successful, and the GSM icon and the sound card icon are displayed at the same time, and the host automatically enters after the 4G network status is long on. In normal working state, the GSM signal icon will appear on the screen, which means that the GSM signal is normal and good. If the battery is low, please turn on the backup battery. Turn off to on [ON] state to charge the battery.




















>>System Settings

In the standby state, enter the four-digit project password [6666] project password, press [#] key to confirm. The host voice prompts: "Please enter the command", and at the same time the [SET] light is on and the display shows [-], indicating that it has entered the setting state. When setting the state, you can repeatedly perform a variety of function setting operations. If you stop operating the keys on the host for more than 30 seconds, the host will automatically exit the settings and return to the standby state. Note: The factory default value of the project password is [6666].The following settings are all performed in the setting state, input the setting address and setting content in turn, and press the "#" key to complete the setting.









Host function button

| | |
|--|---|
| Host SOS button  | <ol style="list-style-type: none"> 1.The host speaker plays the distress alarm sound 2.The alarm status of the host shows the distress alarm (from the zone XX) 3. Send an alarm SMS to the preset alarm phone (premise the alarm number is preset and the SMS enable switch is turned on) 4. Dial the alarm call to the preset phone number (pre-set the alarm number and turn on the phone enable switch) 5. APP pushes the device mode to the mobile phone (push device mode:, urgent request save! Zone XX! From XXX alarm host) -> premise APP and host alarm Distribution network, mobile phone open alarm push |
| Out arming  | <ol style="list-style-type: none"> 1.The host speaker broadcasts the system arming sound 2. APP pushes the device mode to the mobile phone (push device mode: go out to arm, The premise is that the APP and the host alarm are connected to the network, and the mobile phone opens the alarm push. |
| System disarmed  | <ol style="list-style-type: none"> 1.The host speaker broadcasts the disarming sound of the system 2. APP pushes the device mode to the mobile phone (push device mode: disarm, the premise is that the APP and the host alarm are connected to the network, and the mobile phone opens the alarm push. |
| system dial  | When the host network is good, you can directly dial the phone number and press the dial button |
| * / # | <ol style="list-style-type: none"> 1.*button: go back to the previous level 2.#button: confirm 3.*button and #button: exit settings |

Host screen display status type

| | |
|------------------------------------|---|
| GSM status display | <ol style="list-style-type: none"> 1.The GSM icon keeps flashing if the SIM card is not inserted or the wrong one is inserted  2. The GSM network field strength icon shows:  3. If no icon is displayed, it means there is no network. Grids 1 to 5 show the current field strength. 4. The default setting of the program shows full grid 5. Field strength range: 0-32,99 means no signal 6. Check the actual field strength in the version on the host: CSQ value |
| GSM Status | <ol style="list-style-type: none"> 1. Send SMS without icon display 2.The dialing call icon shows:  3.When the call is connected, the icon displays  |
| Battery capacity | <ol style="list-style-type: none"> 1.The icon does not display when the battery is powered or the external power supply voltage is normal 2. The low voltage icon shows: The low voltage icon is displayed correctly, and the APP pushes the alarm event:  low battery! ! From intelligent alarm host 3. Main power failure When the main power supply is disconnected from the external power supply, the APP alarms and pushes the power event: AC! ! from the alarm panel 4. Main power recovery Connect the main power supply to the external power supply, and the APP alarms and pushes the power supply event: AC recovery! ! From intelligent alarm host |
| Learning accessory status | <ol style="list-style-type: none"> 1. The icon display when learning remote control:  2. The icon display when learning accessories:  |
| clock status | <ol style="list-style-type: none"> 1. Display the clock icon after power on:  2. The middle part of the screen will display: year/month/day time |
| Alarm status | When the host is in alarm, the icon displays:  |
| Armed status | Press the icon to display when arming away from home or arming at home  |
| disarmed status | Press the icon when disarmed to display:  |
| Smoke (fire) Alarm status | The icon displays when a zone is in this alarm type:   |
| SOS alarm status | The icon displays when a zone is in this alarm type:   |
| Carbon monoxide (gas) alarm status | When a zone is in this alarm type when the icon is displayed   |
| Hall alarm status | Icon displayed when a zone is in this alarm type   |

Host screen display status type

| | |
|------------------------------------|--|
| Window alarm status | Icon displayed when a zone is in this alarm type   |
| Perimeter Alarm Status | The icon displays when a zone is in this alarm type:   |
| Balcony alarm status | Icon displayed when a zone is in this alarm type   |
| Main door (door lock) Alarm status | The icon displays when a zone is in this alarm type:   |
| make a call | Support 2G/4G mobile telecom "0" to disarm, "1" to arm, "9" turns off the siren, "#" hangs up |

| set content directory | Setting address | setting content | |
|-----------------------------------|-----------------|-----------------|---|
| WiFi network configuration | 00 | | Input 00-# host voice broadcast has entered WiFi network configuration mode; 1. The network distribution time is 60s, and the voice prompts for successful networking 2. When the configuration time is up, the WiFi configuration fails |
| Language configuration | 11 | 1-11# | 1 Chinese, 2 English, 3 Italian, 4 Polish, 5 Russian, 6 Greek, 7 French, 8 German, 9 Spanish, 10 Portuguese, 11 Hungarian |
| Remote control code | 21 | 1-8# | example 1, up to 8 can be set |
| Remote control delete | 22 | | |
| Wireless defense zone code | 23 | 1-199# | example 2, up to 200 can be set |
| Delete a wireless zone | 24 | 1-199# | |
| Delete all wireless defense zones | 25 | | |
| Zone alarm mode setting | 26 | 1-208# | example 3, up to 208 (including 8 wired zones) can be set |
| Siren time setting | 32 | 00-15# | 00-15 is the ringing time, the unit is minutes, the factory value is [03] |
| Arming delay time setting | 33 | 00-99# | 00 ~ 99 is the arming delay time, the unit is second, the factory value is [00] |
| Alarm delay time setting | 34 | 00-99# | 00~99 is the alarm delay time, the unit is second, the factory value is [00] |

| set content directory | Setting address | setting content | |
|---|-----------------|-----------------|--|
| Phone dialing times settings | 35 | 0~9# | 0~9 is the number of dialing times, the factory default value is [3] |
| Modify user password | 38 | | 0000-9999 Factory default: 1234 |
| Revise engineering password | 39 | 0000-9999# | Enter the four-digit engineering password and press "#". Note: The factory default is: 6666 |
| Host Keypad Lock Settings | 40 | 0-1# | "0" means: close, "1" means: open, the factory value is [0] |
| Host timing function settings | 41 | 0-1# | "0" means: close, "1" means: open, the factory value is [0] |
| Host timing arm and disarm settings | 42 | AABB, XYYY | AABB stands for: disarm time -- hours and minutes, XYYY stands for: arm time hours and minutes |
| Host reset settings | 43 | | Do not delete remote control accessories |
| Host history query | 44 | | Press "2" to scroll up, press "8" to scroll down |
| Clear host history | 45 | | |
| Arm/disarm SMS prompt settings (optional) | 46 | 0-1# | "0" means: close, "1" means: open, the factory default is [0] |

| set content directory | Setting address | setting content | |
|-----------------------------|-----------------|----------------------------------|---|
| clock setting | 48 | Year/month / day/hours /minutes | Example4 |
| Host SMS number settings | 49-50 | Mobile phone (fixed line) Number | Up to 2 groups can be set |
| Host SMS number deletion | 49-50 | | |
| Alarm phone number settings | 51-56 | Mobile phone (fixed line) Number | example 5, up to 6 groups can be set |
| Delete the alarm | 51-56 | | |
| Zone alarm type setting | 60 | 1-208# | See example 6 (including 8 wired defense areas) |
| Host GSM signal query | 62 | | In the disarmed state, enter the command engineering password 6666#, -62-#, you can check the signal strength |
| Host IMEI query | 63 | 0-32# | See Example 7 (99 means no signal) |

Example 1. Remote control code

In the disarmed state, enter the engineering command [6666#]-[21] key + [N] (N represents the serial number of the remote control), press the [#] key to confirm, the host will beep once, and the voice prompts "The remote control sends a code" "[🔊]" The pairing icon will be on for a long time, and the LCD will display the remote controller that is pairing at this time. Press any key on the remote controller that needs to be paired; after the host receives the signal, a "beep" will sound, and the voice prompts "Successful learning" "[🔊]" The pairing icon is off, and the remote controller is successfully paired. After the code is successfully matched, it will automatically return to the previous layer. If you need to operate, repeat the operation method of the previous action: [6666#] → [21] → [1-8#]

Note: The same remote controller can only be paired once, and can be paired with up to 8 remote controllers. Support the learning of 8 remote controls, click "+" to learn accessories, Follow the instructions of the host to operate. If the host voice prompts "Accessories have been learned", it means that the code of this remote control has been learned or duplicated with other learned detector codes, please try another remote control and try again.

Example 2. Wireless zone matching

In the disarmed state, enter the engineering command [6666#]-[23], then enter the defense zone to be paired [1-200], and press the [#] key to confirm. The LCD displays the corresponding defense area, and the voice prompts "detector sends a code" to trigger the

detector that needs to be paired, and the host receives the message. After the number is entered, a "beep" will sound, the voice prompts "Successful learning" and two [🔊] pairs are matched, and the icon goes out.

Operation method: [6666#] → [23] → [XX] → [#]
XX stands for: 1-200 zone number.

Example 3. Zone alarm mode and alarm type setting

In the disarmed state, enter the engineering command [6666#]-[26] key, then enter the wireless zone number [1-200], and then enter the alarm type of the accessory [1~8], and press "#" to confirm; The host will beep once, and the voice prompts "set successfully". The accessory alarm mode has been edited successfully.

Operation method: [6666#] → [26] → [XX] → [Y] → [#]

XX represents: two-digit zone number; Y represents: alarm mode
For example: 02 zone alarm mode is set to go out to arm

Operation method: [6666#] → [26] → [02] → [1] → [#]

Zone alarm mode

When the alarm mode of the accessory is set to "0": in any state, the accessory will not trigger the host to alarm;

When the alarm mode of the accessory is set to "1": only when the host is out of the armed state, or stay at home to arm, the accessory will trigger the host to alarm; When the accessory's alarm mode is set to "2": only when the host is arming outside, the accessory triggers the alarm host to give an alarm, and when the host is at home, the accessory triggers the alarm host and does not alarm;

When the alarm mode of the accessory is set to "3": no matter what state the host is in, the trigger of the accessory will cause the alarm host to alarm (it will also alarm when it is not armed).

Example 4. Clock setting method

In the disarmed state, input the engineering command [6666#]-[48], then input the last two digits of the current year [AA]; add the two-digit month [BB]; add the two-digit date [CC]]; add the current hour time (24-hour clock) [DD]; add the current Minute time [EE]; press [#] key to confirm, the host voice prompts, the operation is successful How to do it: 【6666#】→[48]→

【AA】→【BB】→【CC】→【DD】→[EE]→[#]

AA stands for: the last two digits of the current year.

BB stands for: the two-digit number of the current month

CC stands for: Two digits of the current date.

DD stands for: Hours of the current time: (24-hour clock).

EE stands for: Minutes of the current time.

For Example: May 26, 2017 at 17:30 pm

Operation method:[6666#]→[48]→[17]→[05]→[26]→[17]→[30]→[#]

Example 5. Alarm phone number setting

In the disarmed state, enter the engineering command [6666#]-[51-56] key, then enter the mobile phone number, press the [#] key to confirm, the host voice prompts "operation successful".

Operation method: [6666#]→[XX]→[YY...YY]→[#]

XX stands for: 1~6 groups of telephone codes [51~56].

YY--YY represents: set the telephone (mobile phone) number.

For example: take 13811110751 as the first group of alarm calls.

Operation method: [6666#]→[51]→[13811110751]→[#]

Example 6. Alarm type setting

In the disarmed state, input the engineering command [6666#]-[60] key, select the corresponding zone number[02-99] key, then input [1-8] zone alarm type, press [#] to confirm, and the voice prompts" Set up successfully"

Operation method: [6666#]→[60]→[XX]→[A]→[#]

XX represents the zone number: [1-208] correspond to zones 01 to 208 respectively.A stands for alarm type: [1] SOS alarm, [2] Fire alarm,[3] Gas leak, [4] Door lock alarm, [5] Hall alarm, [6] Window alarm, [7] Balcony alarm, [8] Perimeter alarm.The alarm type is sent to the mobile phone by SMS

For Example: Set zone 10 as a fire alarm

Operation method: [6666#]→[60]→[10]→[2]→[#]

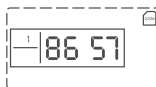
Example 7. Host IMEI query

In the disarmed state, input the engineering command [6666#]-[63] key, and press the "#" key to confirm. IMEI consists of 15 digits, and the display is divided into four screens to display the complete, press [2] to turn up, Press [8] to scroll down.

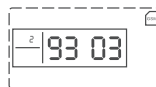
For example: the host IMEI is 865793033457189

Note: Press [*] to return to the previous layer

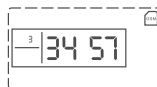
First screen display



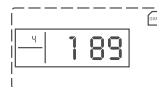
Second screen display



Third screen display



Fourth screen display



> > Exit Settings

After the setting is completed, you need to exit the setting state, enter the [*][#] key, the host will make a beep, and exit the setting state. The [SET] light goes out and returns to the standby state.

> > Exit Settings

Under normal circumstances, the alarm panel usually only has the following four states:

» **Arming status:** After arming, 1-208 zone alarm is valid.


» **Arming at Home:** After arming, set it to [Arm at Home] to alarm in a valid zone.


» **Disarm status:** After disarming, the 1-208 zone will not alarm (except for the 24-hour zone)


» **Setting status:** When setting, all defense zones will not alarm.


6.Daily operation

The remote control is a device that performs various functions on the alarm host by radio. The function is to facilitate the user to carry out operations such as going out arming, arming at home, emergency alarm, and disarming the alarm host outside the door or entering the house.

» **Arming when going out:** Press the  key, the main unit is in the arming state immediately. Arrange security tasks(referring to anti-theft) to make the host enter the alert state, also known as fortification and vigilance.

» **Disarm operation:** press the  key, the main unit will alarm immediately or be in disarm state. Revocation of security tasks (referring to anti-theft), also known as disarming.

» **Arming at home:** Press the  key to be in the arming state at home (stay behind). When the user is at home, he only needs to set an alert state for the entrance, exit or perimeter, which is also called home defense.

» **Emergency alarm:** Press the  key, the host will send an alarm immediately. After the host generates an alarm task, the on-site sound and light alarm is issued, and a series of alarm actions such as the alarm content are pushed to the mobile APP.

» **Defense zone triggering:** When the detector in the armed state or set to 24-hour defense zone detects someone or the door is opened, the detector triggers, and an alarm task is generated.

» **Arming delay:** After the host is armed, the extended time is set to avoid the alarm when the user leaves the scene and passes through the arming area. It is also called the exit delay.

» **Alarm delay:** After the user comes back and triggers the detector after passing through the armed area, the host will not alarm immediately, providing a period of time for the user to disarm the host, and the host will alarm if the host cannot be disarmed after timeout, also called entry delay.

7.Alarm procedure and alarm handling

Once the alarm host alarms, the siren will sound a prompt; first, it will send a short message to tell the user which defense zone has an alarm situation, and then automatically dial the preset number (mobile phone) for voice alarm. When the call connected by the alarm is not answered, the host will automatically transfer the next group of calls, and dial all the preset phone numbers three times (factory default).If the dialed call is picked up on the hook, an alarm voice message will be sent from the handset immediately.

At this point, press the keys of the phone (mobile phone) keyboard to achieve different functions:



After the phone is connected, the user operates the keys according to the voice prompts.


Note: The alarm dial does not support voice prompts, and does not support the "#" key to hang up Directly on-hook: Same as no answer, the host dials all calls cyclically three times each.

8.Remote Control

Dial the phone number connected to the alarm host through the phone (mobile phone). After the set number of rings is passed and the phone is connected, the user operates the key according to the voice prompt.



9.Sos

In the family, some special situations sometimes occur: the elderly or children have a sudden illness and need first aid; a fire suddenly occurs in the home and needs to be rescued; gangsters enter the house to commit robbery and need to report to 110. At this point, just press the [] emergency button on the main unit, the [] button on the remote control, and the emergency button. The alarm system will alarm immediately, and automatically make a phone call to alarm.

Remote control operation: Press the [] button on the remote control once.

Host operation: [] emergency button on the host keyboard.

10.Additional features

In disarmed state, enter the phone number directly, for example 【13800138000】 , then press [] to confirm, the host will make a beep, and the dialing is successful. After the call is completed, press [] to confirm, hang up, the host is in disarmed state

11.Maintenance

> > System detection

Although the alarm system is used every day, it must be regularly maintained and tested to ensure the stable, reliable and safe operation of the alarm system. Usually, the alarm host must be inspected comprehensively every three months, and the detector should be inspected once a month, and at least every three months if there is no condition.

> > Host detection:

1. Whether the host can arm and disarm normally.
2. Whether the host alarm can make outgoing calls normally.
3. Whether the signal of the detector can be received normally or whether the backup battery is normal.

> > Probe detection:

1. Manually trigger the detector to check whether the alarm is normal.
2. Check the batteries of all detectors to see if they are under-voltage. Test the launch of the wireless detector to see if it can communicate with the host.

12. Technical parameters

- Input voltage: DC5V
- Working current: screen off <100mA, screen on <200mA
- Stand-by current: <55mA
- Alarm current: <600mA
- Radio frequency: 433MHz
- RF code: 1527(330K)
- GSM: 850/900/1800/1900MHz
- Backup battery: 3.7V/1000mAh rechargeable lithium
- Siren Alarm: >100dB@1m
- Wireless distance: <100m
- Operation temperature: -10℃—55℃
- Relative humidity: <80%RH (non-condensing)

13. Notes:

Do not disassemble, repair and modify the product without permission, otherwise accidents and failures may occur. Do not drop the product on the ground or hard objects to avoid strong impact, resulting in malfunction and damage. Without the permission and consent of the relevant departments, please do not directly set the "110", "119" or the police station's alarm phone as the host's alarm phone.